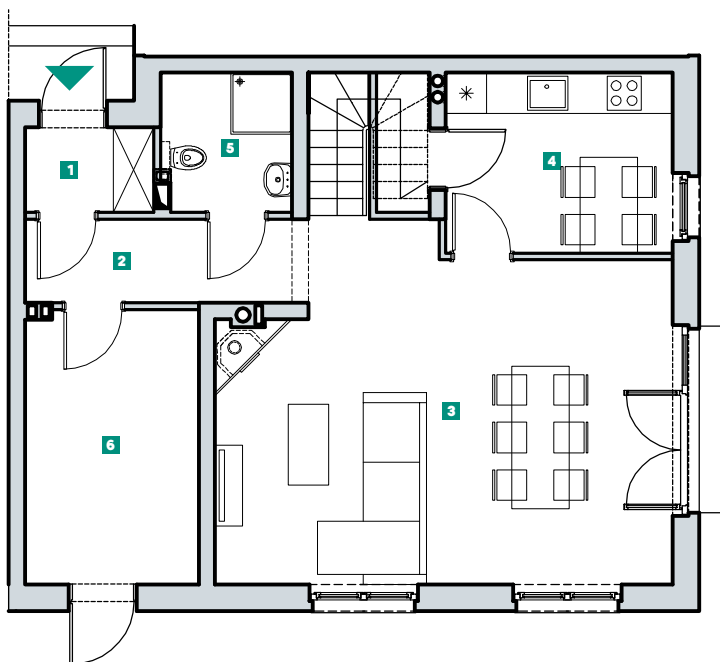


# DOM 24 - TYP D

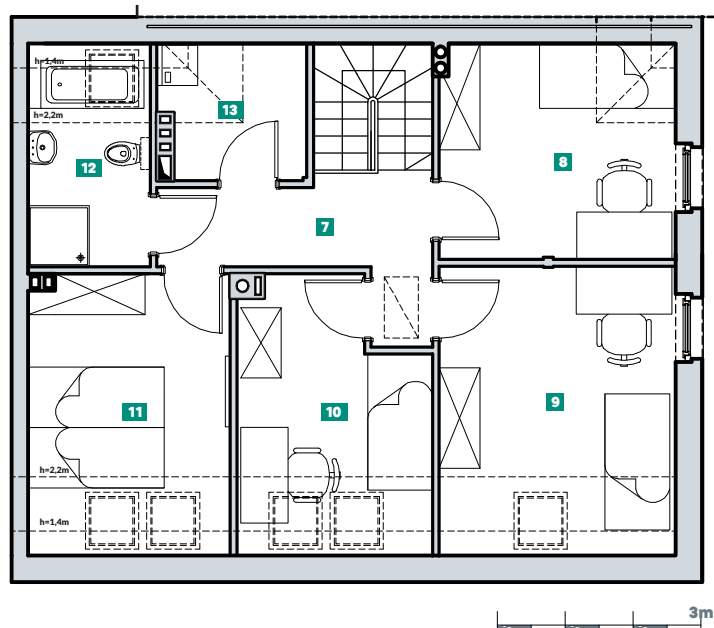


**AVIOR**  
DOMY SZEREGOWE  
DOBZYKOWICE

POWIERZCHNIA: **116,91 m<sup>2</sup>**  
POWIERZCHNIA DZIAŁKI: **318,28 m<sup>2</sup>**



OGRÓD



|                     |                     |             |                     |
|---------------------|---------------------|-------------|---------------------|
| 1 WIATROŁAP         | 2,27m <sup>2</sup>  | 8 POKÓJ     | 10,02m <sup>2</sup> |
| 2 KORYTARZ + SCHODY | 7,95m <sup>2</sup>  | 9 POKÓJ     | 11,95m <sup>2</sup> |
| 3 SALON             | 30,49m <sup>2</sup> | 10 POKÓJ    | 8,24m <sup>2</sup>  |
| 4 KUCHNIA           | 8,64m <sup>2</sup>  | 11 POKÓJ    | 9,80m <sup>2</sup>  |
| 5 ŁAZIENKA          | 3,77m <sup>2</sup>  | 12 ŁAZIENKA | 4,41m <sup>2</sup>  |
| 6 KOTŁOWNIA         | 10,06m <sup>2</sup> | 13 PRALNIA  | 3,30m <sup>2</sup>  |
| 7 KORYTARZ          | 6,01m <sup>2</sup>  |             |                     |

ETAPY KOLEJNE

ETAP 1

